



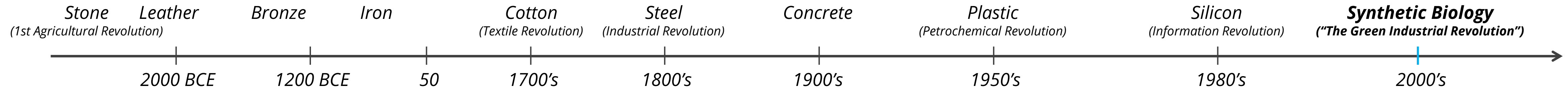
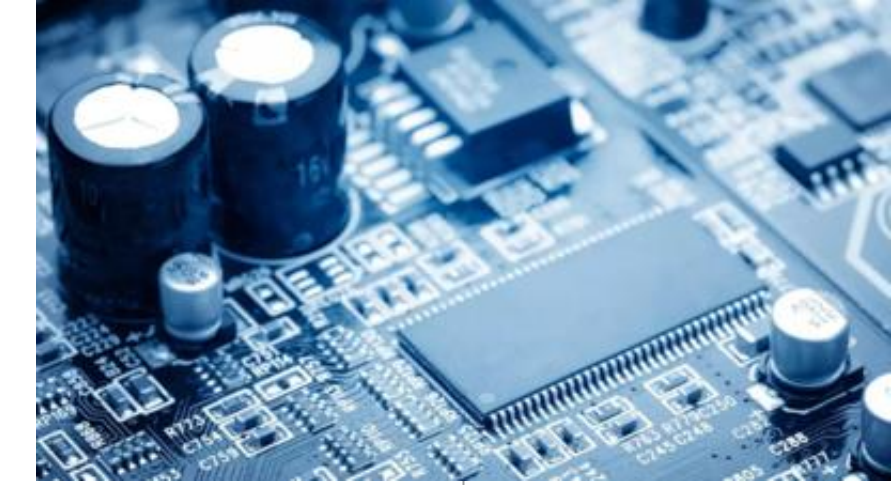
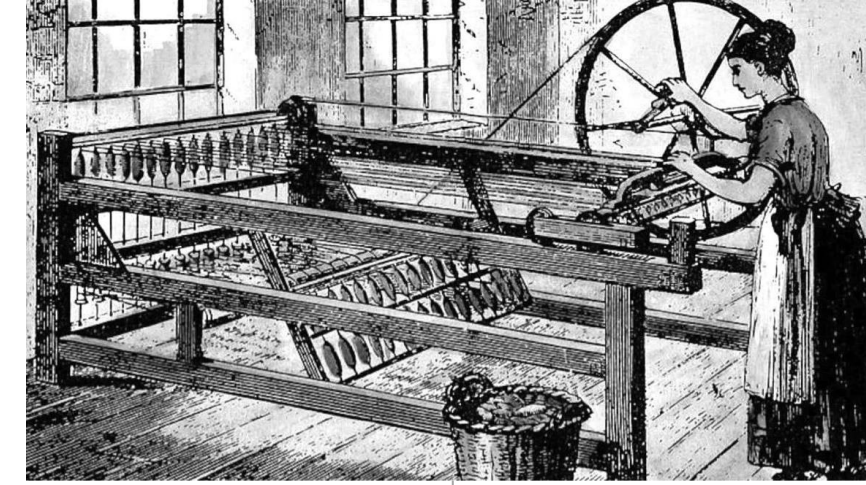
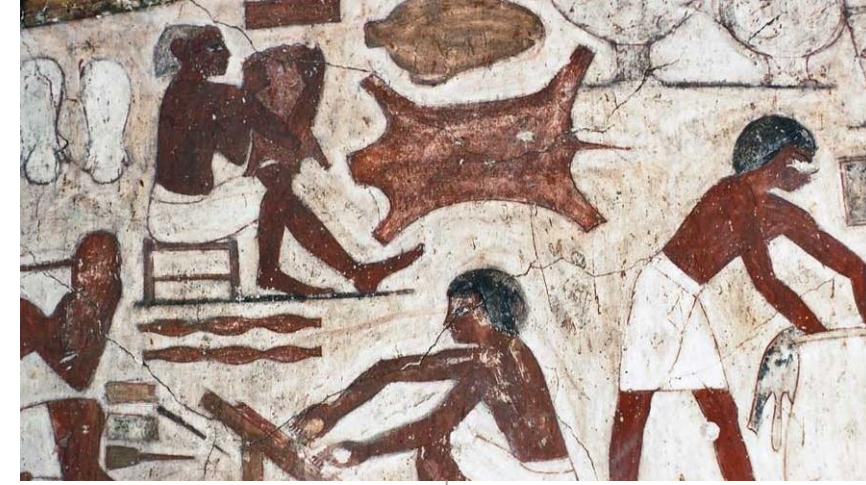
 **MODERN
MEADOW**

COMPANY OVERVIEW
April 2023



Opportunity

Materials are foundational to human progress; **synthetic biology is the next frontier**





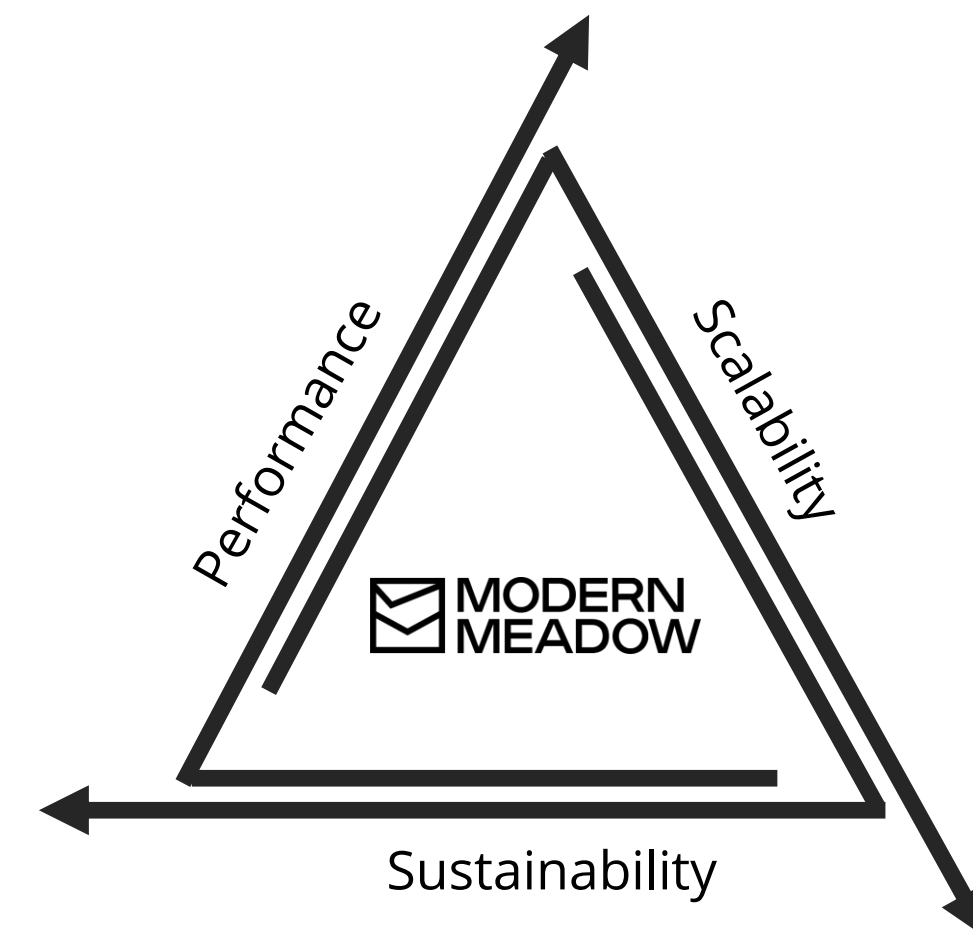
Solution

Proteins for Change: A catalyst for the wellness of people & the planet

Modern Meadow is a protein design and application powerhouse, creating next-generation materials using synthetic biology.

By harnessing the unique properties of proteins as building blocks for bio-fabrication, we help the world move away from petrochemical & animal-derived inputs.

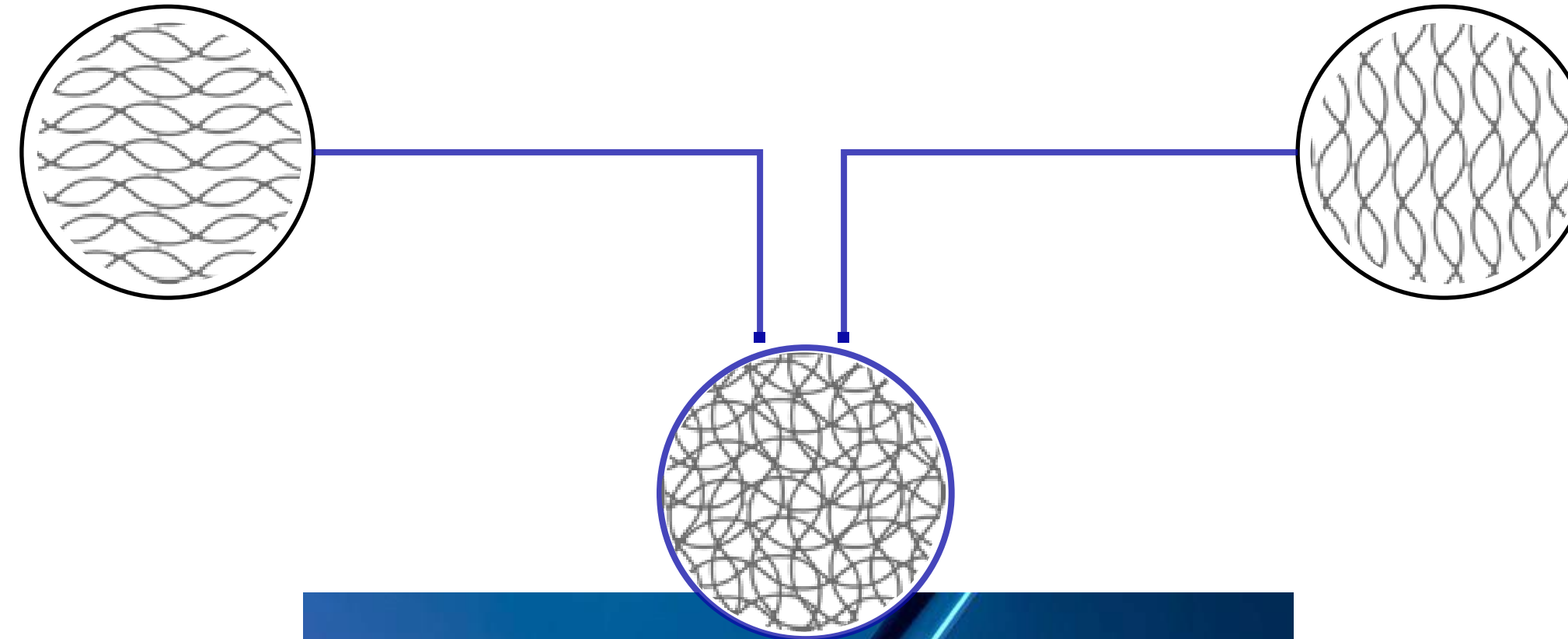
We are an upstream/horizontal biotechnology platform, and we scale by deploying our bio-fabrication technology with top-tier partners who share our values to drive real-world sustainable impact.



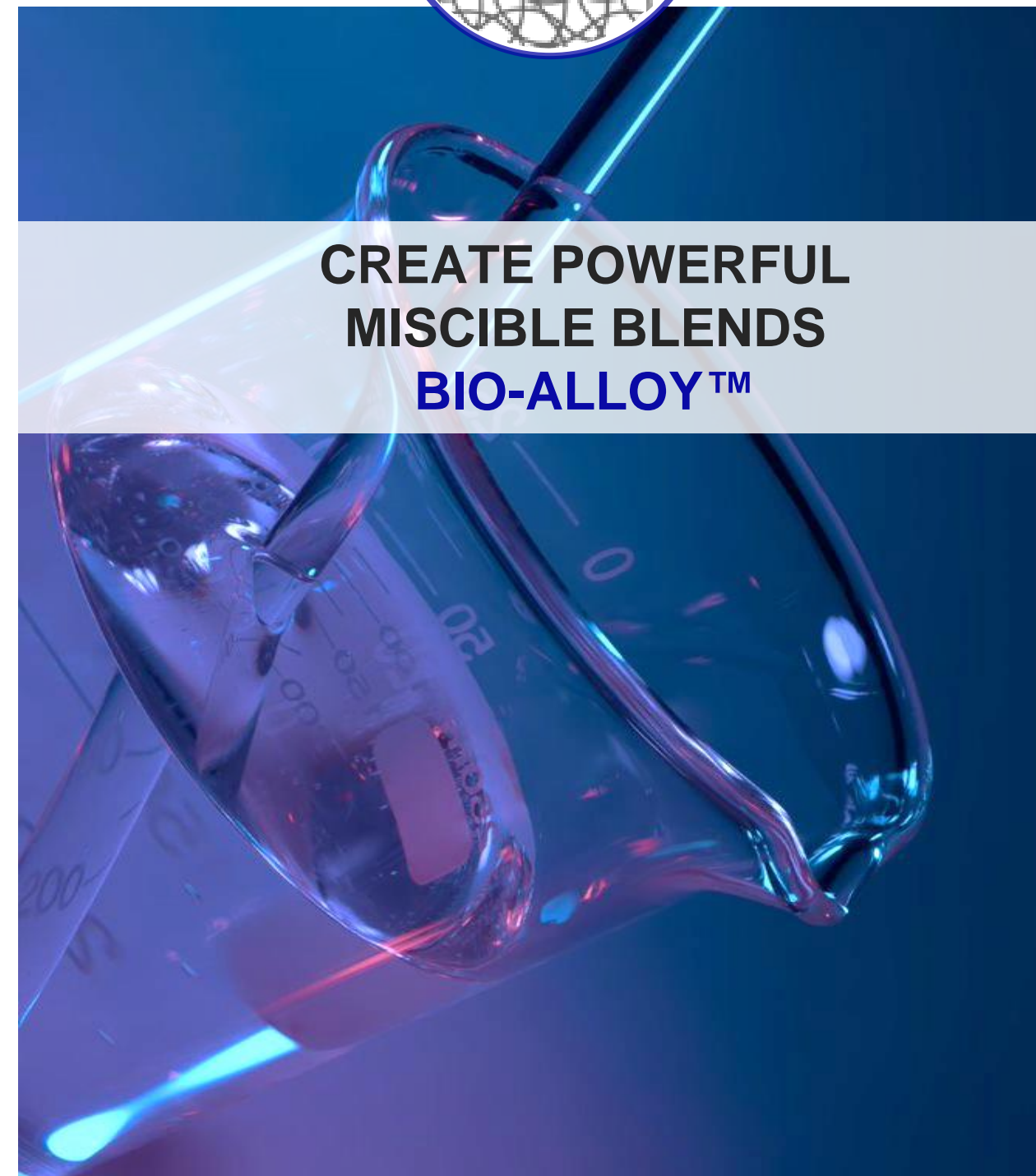
Technology Platform

An application powerhouse combining the power of proteins and polymers

GENETICALLY ENGINEER or
select **PLANT PROTEINS**



SELECT and **COMBINE**
with **BIO-POLYMERS**



**CREATE POWERFUL
MISCIBLE BLENDS
BIO-ALLOY™**



Commercialization Traction

We have brought **Iconic products to market**, allowing our consumers to make **climate-responsible choices without sacrificing performance**

SEPREVE

EVERLANE

TORY BURCH

Unilever **Kolmar**

Unilever **Kolmar**



Summer/Fall 2022 Collection
~2,000 Handbags in 5 Colors
 (2023 Collection Re-Order Underway)

Fall 2022 Collection
~4,000 Handbags in 3 Colors
 (2023 Collection Re-Order Underway)

Spring 2023 Collection
~60,000 Handbags in 7 Colors
 Orders Underway: Summer 23, Fall/Holiday 23, Spring 24

- **1st SKU Launched in 2022:** formulated into **~10 million creams sold in 2022**
- **Expanded SKU 2022**
- **Contract Renewed for 2023**

Sustainability:

- ✓ LCA shows 91% reduction in greenhouse gas emissions
- ✓ Over 83% reduction in ecosystem impacts
- ✓ Lab-To-Brand™ Transparency & Traceability
- ✓ Animal-free (Vegan) & Ethical

Performance:

- ✓ Durability, abrasion, resistance
- ✓ Quality look and feel
- ✓ No color restrictions

Scalability:

- ✓ Largest bio-based material scaled to date (non-animal)
- ✓ Drops into existing manufacturing infrastructure and supply chains

Performance:

- ✓ Inspired by Human Collagen Type III
- ✓ Clinically Proven Efficacy
- ✓ Safe, Biocompatible, and Bio Stimulation
- ✓ Odorless, Colorless, and Safe

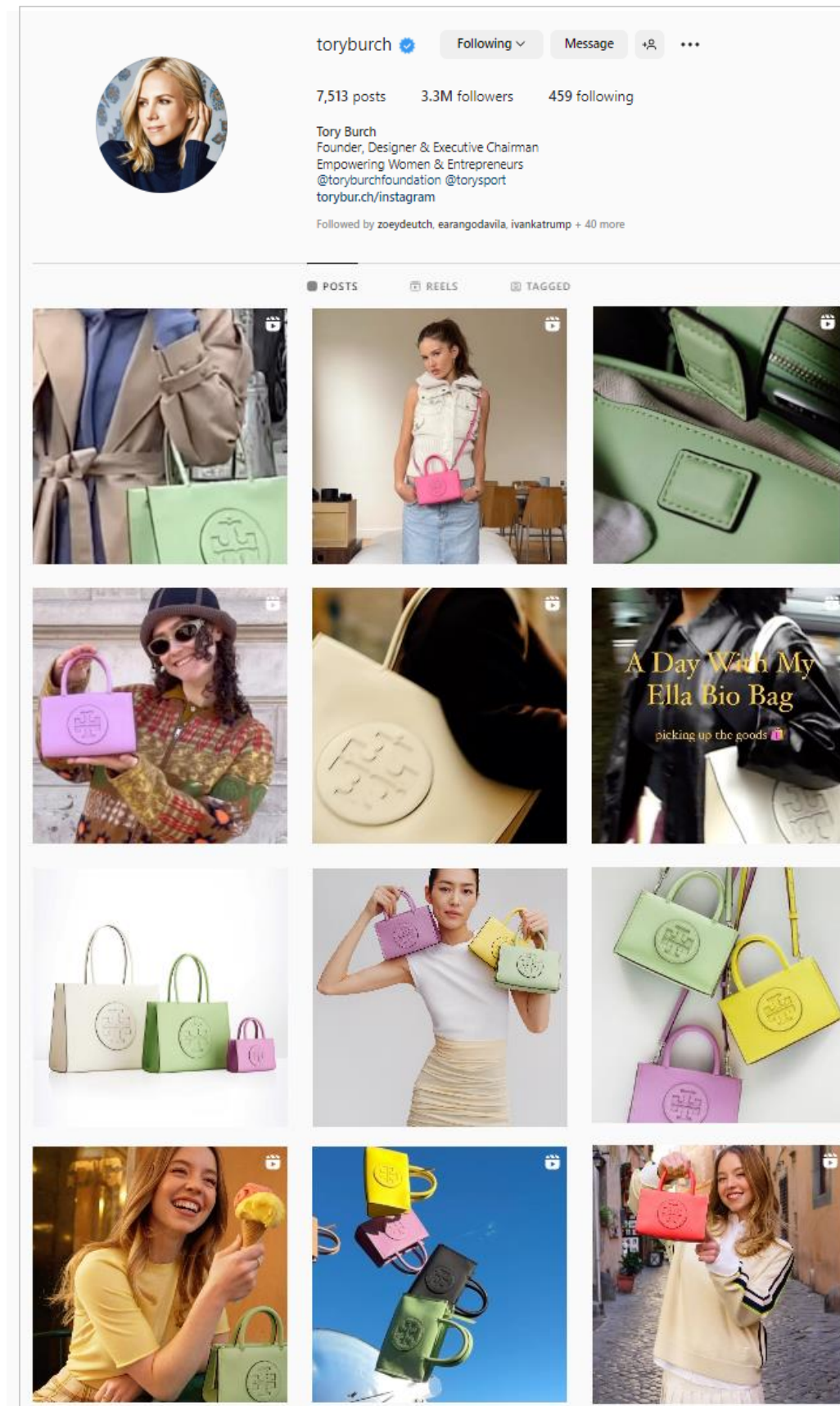
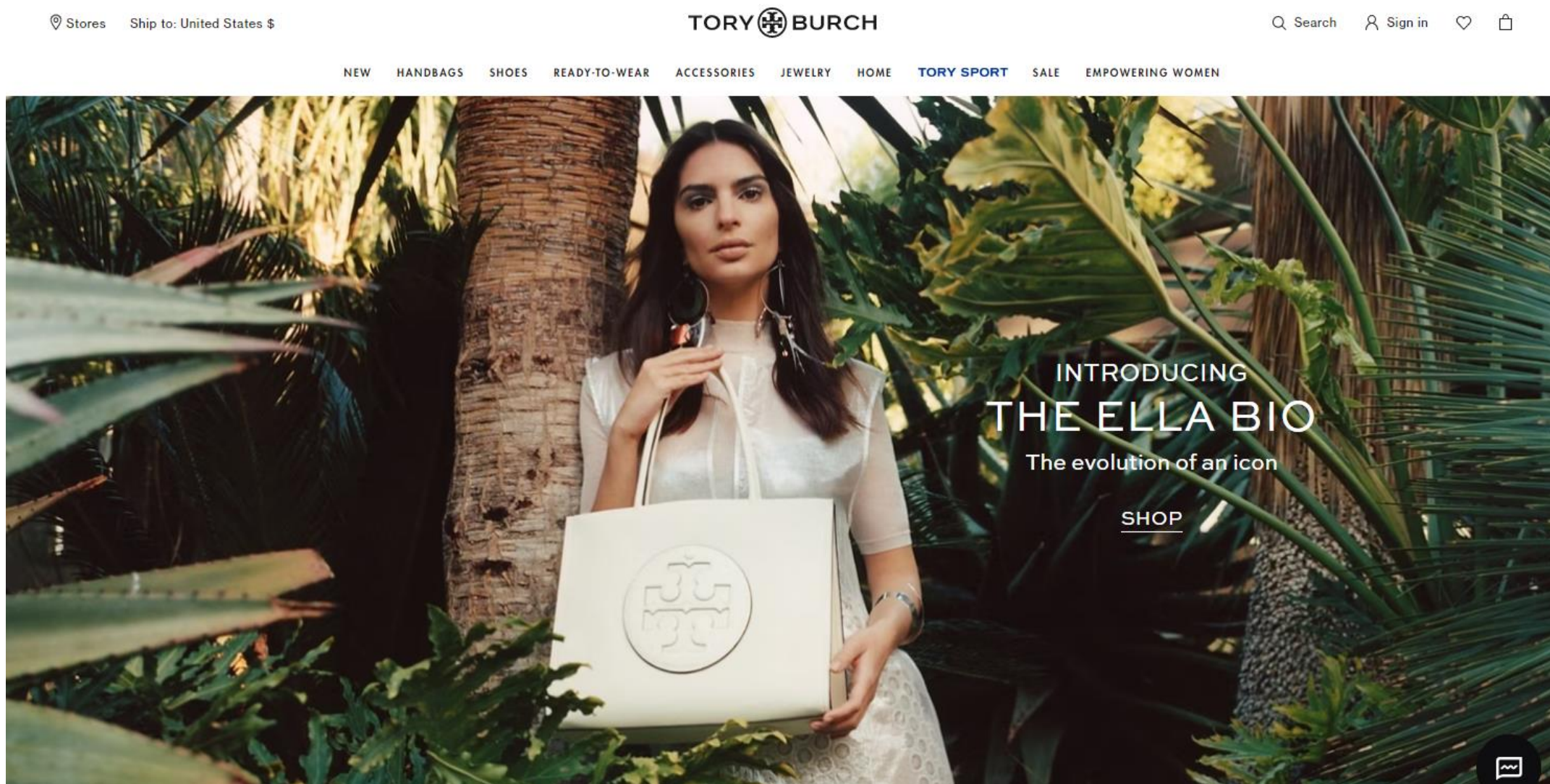
Sustainability:

- ✓ Petrochemical free, Fermentation-based Green Tech
- ✓ Animal-Free collagen, Ethical, Vegan & Cruelty-free, Halal
- ✓ Lab-To-Brand™ Transparency & Traceability



Commercialization: Case Study

Tory Burch ELLA BIO Launch



LARGEST biomaterial launch to date!

VALUE PROPOSITION TO TORY BURCH:

- Durable (signature bag, ~30% of revenues)
- no **color** restrictions! Tunability for design aesthetics
- Abrasion-resistant / scratch-resistant
- Scalable (largest bio-based PO, delivered in 3 weeks)
- Sustainable (64% USDA cert. bio content, 91% less emissions)

SPRING 2023 COLLECTION

- **~60,000 Handbags** (inc. ~10,000 re-stock)
- 7 colors and 3 sizes
- Social Media campaign with model Emily Ratajkowski, actress Sydney Sweeney, and dozens of micro-influencers.

FUTURE LAUNCH DEVELOPMENTS IN-WORK

New colors added for later part of this year and next year

- Summer 2023: 5 new colors shipped
- Fall/Holiday 2023: 8 color samples
- Spring 2024: color samples



“The team tested numerous alternative leathers – those made from apples, pineapples, mushrooms, and cacti. We made numerous prototypes, but none provided the level of benefit we wanted”

Elizabeth Gibbons
Global VP - Product Development

“This feels and looks like leather but is made from 64% plant protein”

Jennifer Gootman
Global SVP - Head of Sustainability and ESG

“Ella Bio is the perfect marriage between American technology and Italian craftsmanship.”

Elizabeth Gibbons
Global VP - Product Development

Purchase the Ella Bio anywhere that carries Tory Burch!

BioMaterials: Applications Overview of Innovations



Bio-Tex™

'Bio-Based Leather-like Coated Textile'

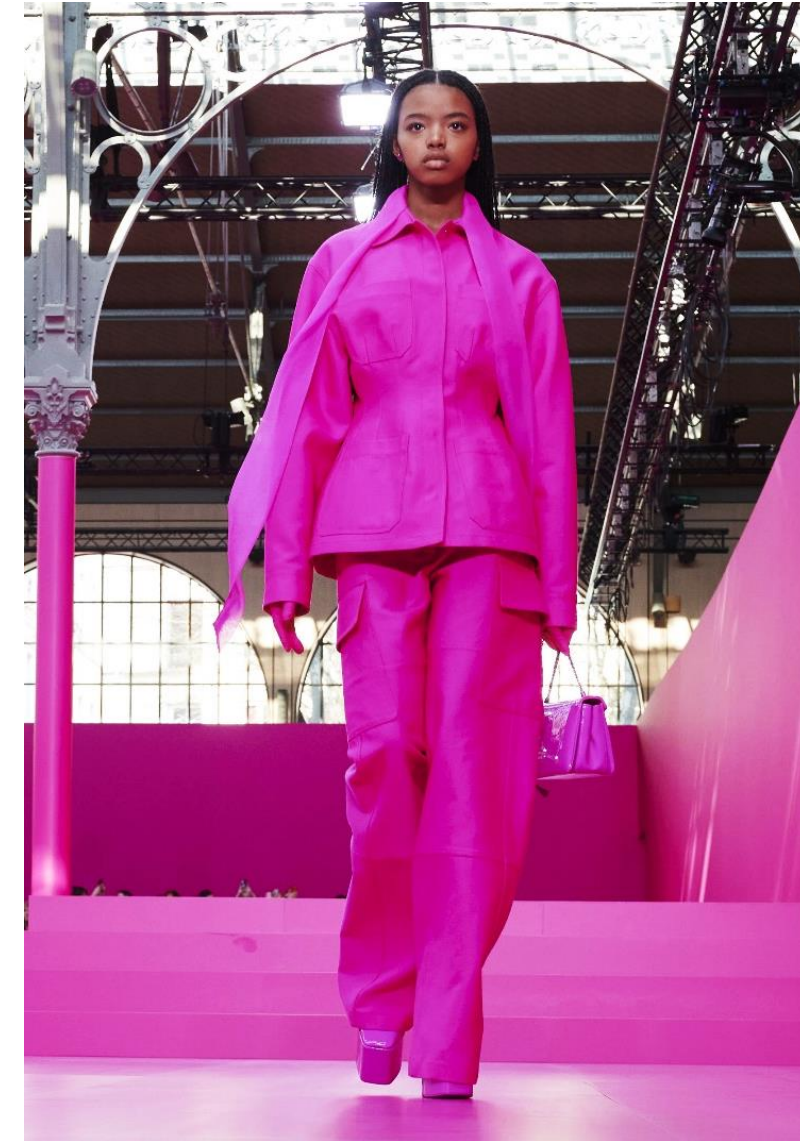
- **Performance:** Durability, Colorfastness, Color Range, Diverse End Use, Leather-like or not, tuneability.
- **Sustainability:** Bio-Tex™ vs Leather (peer-reviewed LCA):
 - **91% Less** greenhouse gas emissions
 - **83% Less** water consumption
 - **90% Less** eutrophication
- **Scalability:** Drop-in Technology, Scaled and Commercialized



Bio-Canvas*

'Bio-Based Streetwear Textile'

- **Performance:** Abrasion Resistance, Colorfastness, Limitless Color Range.
- **Sustainability:** Allow for garment dying, reduction of pre-consumer waste, reduced inputs.
- **Scalability:** Drop-in Technology, Scaled and Commercialized



Bio-FREED™

'Protein Enabled Dyeing Technology'

- **Performance:** Colorfastness & Color Range
- **Sustainability:** Manufacturing Time **10x faster manufacturing time** (15hrs—>1.5hrs)
- **Sustainability:**
 - **95% Less** water use
 - **75% Less** energy use
 - **80% Less** chemical use
- **Scalability:** Drop-in Technology



Bio-Shield™

'Bio-Based Breathable Membrane'

- **Performance:** Breathability, Abrasion & Water Resistance, Simple Construction, No Toxic Chemical, No PFAS, No DWR
- **Sustainability:** Increase bio-content, No DRW, fewer material system layers, reduced inputs
- **Scalability:** Drop-in Technology



Bio-VERA™

'Animal-Free Leather Hide'

- **Performance:** “No Hide Leather”, Long Lasting Naturalness, tuneability
- **Sustainability:** Up to **90% bio-content** with potential biodegradability or recycling end-of-life options
- **Scalability:** Drop-in Technology

Bio-VERA™: Leather Alternative Technology

Material Highlights

A NEW BIO CANVAS FOR LEATHER CREATION

A Next-Gen sustainable, animal-free material that **looks, feels, and naturally ages like traditional leather, suede, and chamois.**

This state-of-the-art, **protein-enriched canvas** allows leather partners to deploy their unique, century-old craftsmanship to create bespoke and beautiful materials.

SCALABILITY

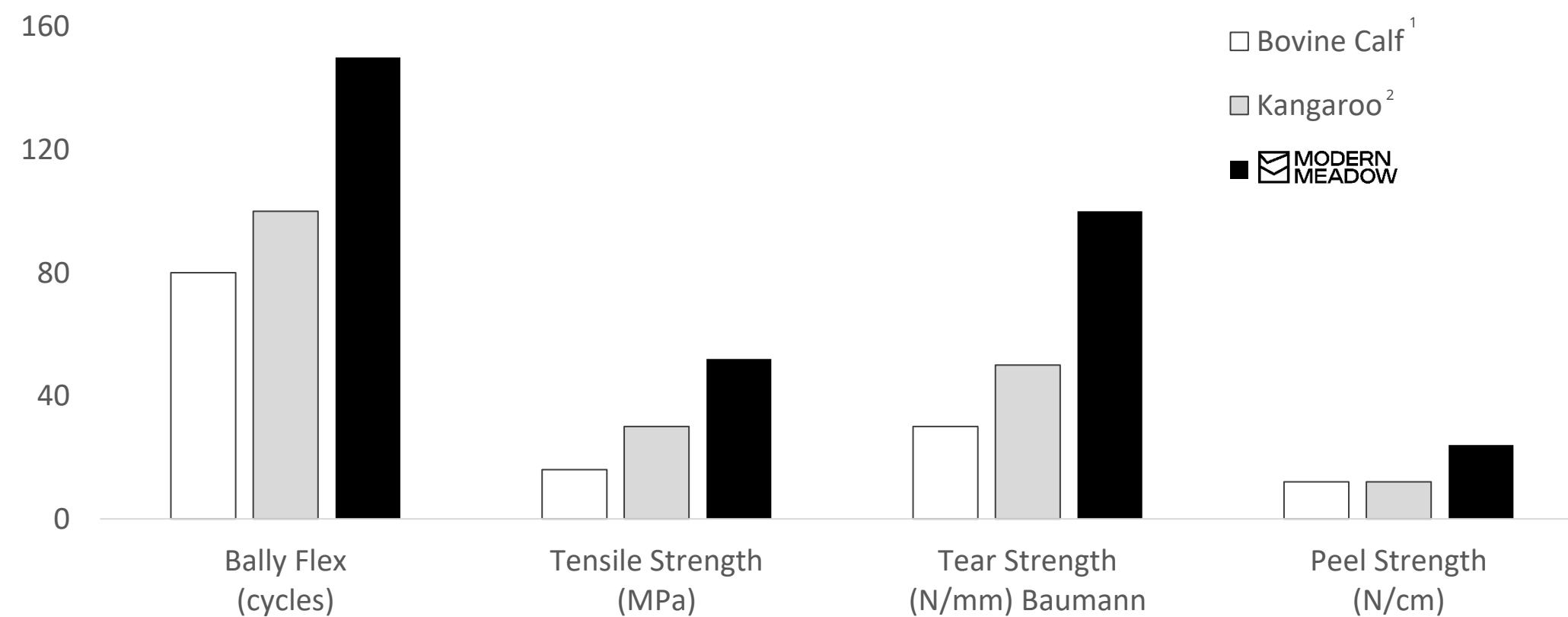
- Bio-Engineered as a **drop-in alternative** for existing leather **post-tanning.**
- **Just-in-time, roll-to-roll process:** reduction in working capital and fixed capital by eliminating inventories of animal hides.
- **Production-ready today.**

PERFORMANCE

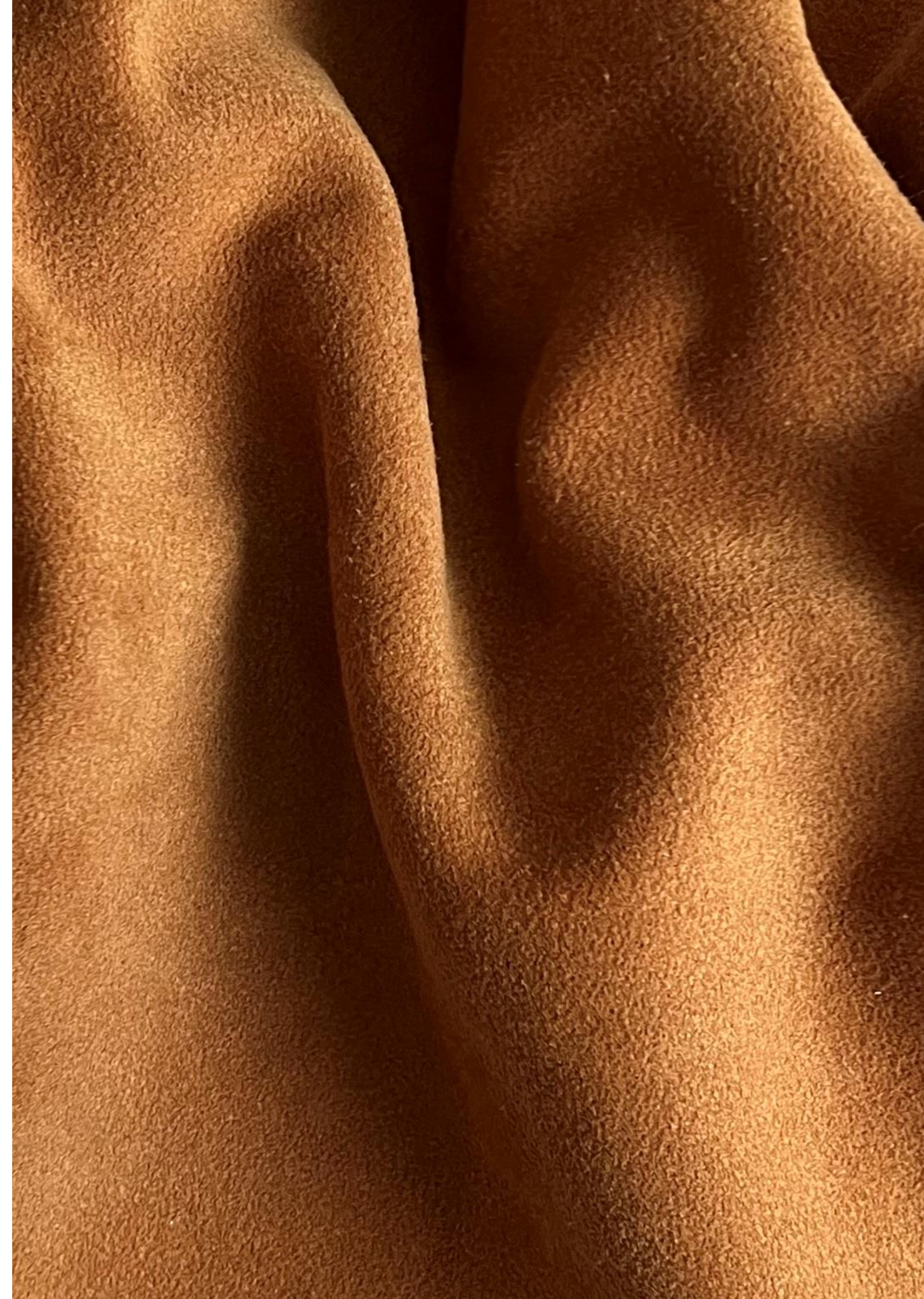
- **Replaces animal hides while maintaining leather's look and feel** across all finishes and colors.
- Enhanced mechanical & durability performance
- Ideal for demanding industries such as **auto & interior**, as well as creative **fashion** applications like **ready-to-wear, footwear, and accessories.**

SUSTAINABILITY

- Combines bio-mass & recycled material with **+90% renewable inputs**, while eliminating animal livestock.
- Shelf-stable, eliminating preservation or cold storage.
- Material with readily available and **traceable inputs.**



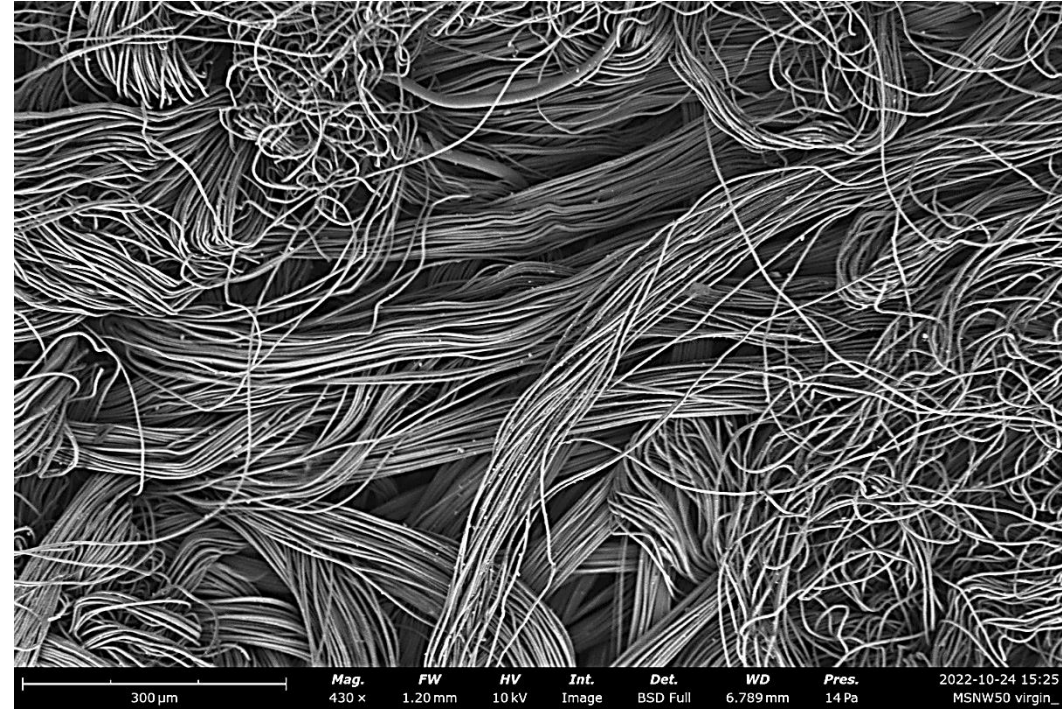
¹ Meyer et al. Coatings, 2021, 11 226. ² Specifications from Adidas K-Leather Note: All Tear properties normalized for thickness



Bio-VERA™: Leather Alternative Technology

Technical Overview

Before: Material Scaffold

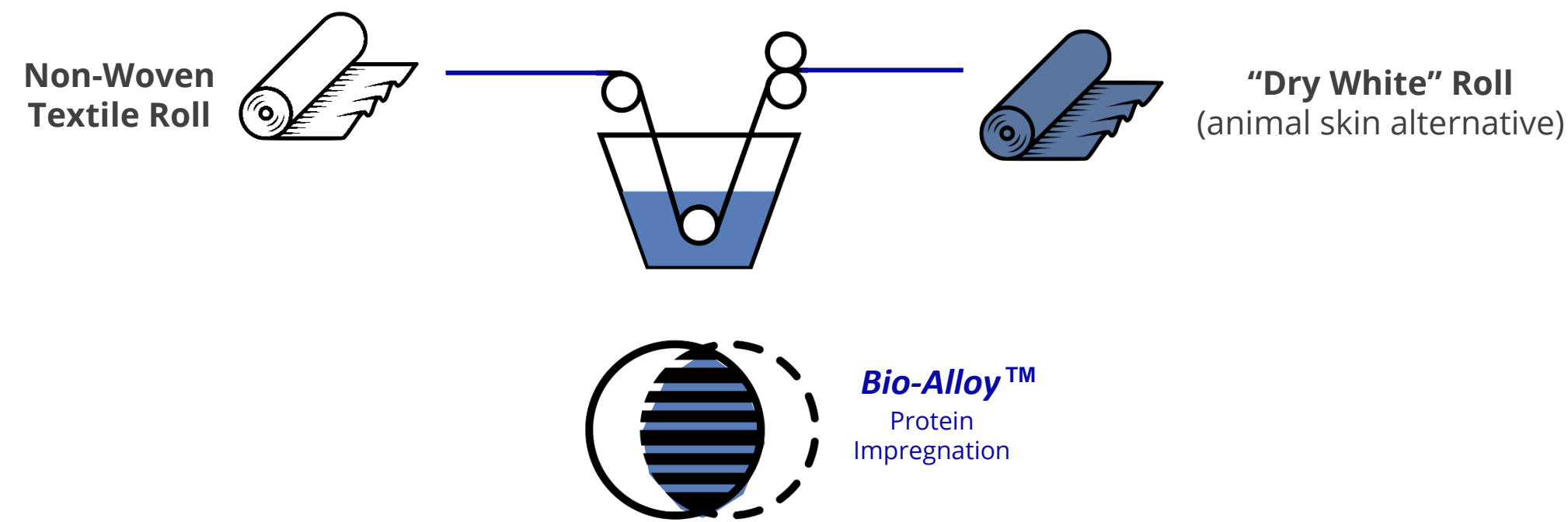


After: Protein-Enriched Canvas



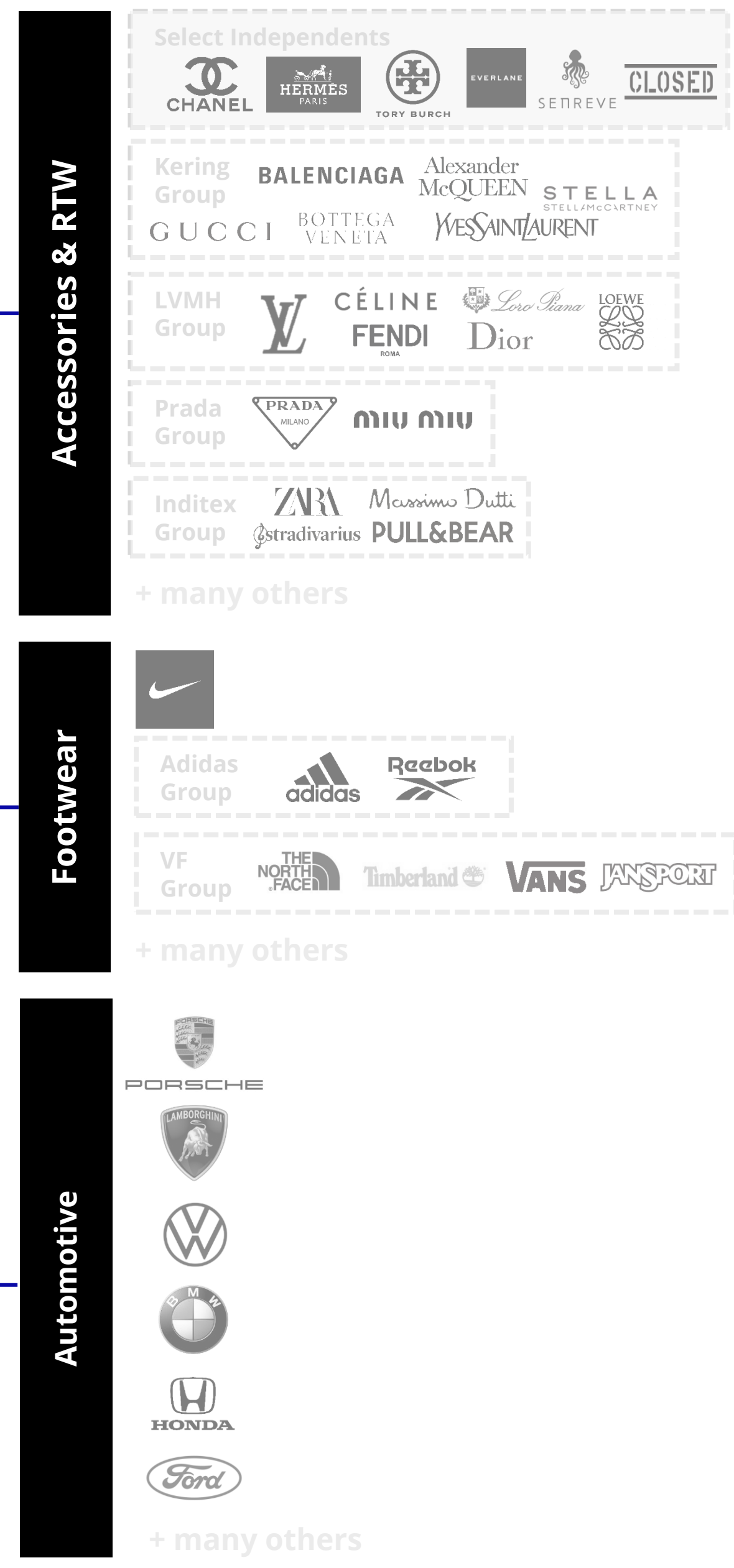
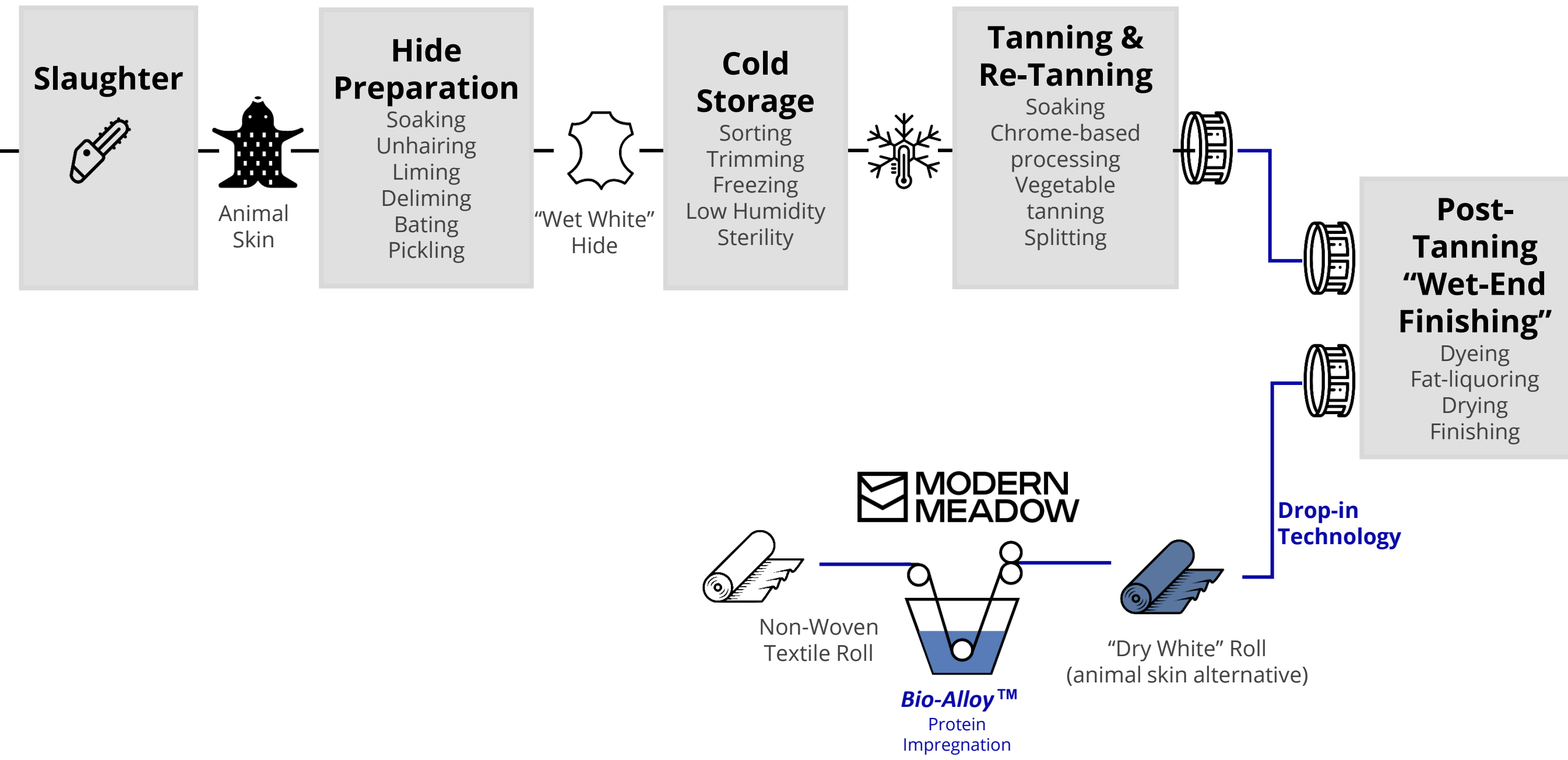
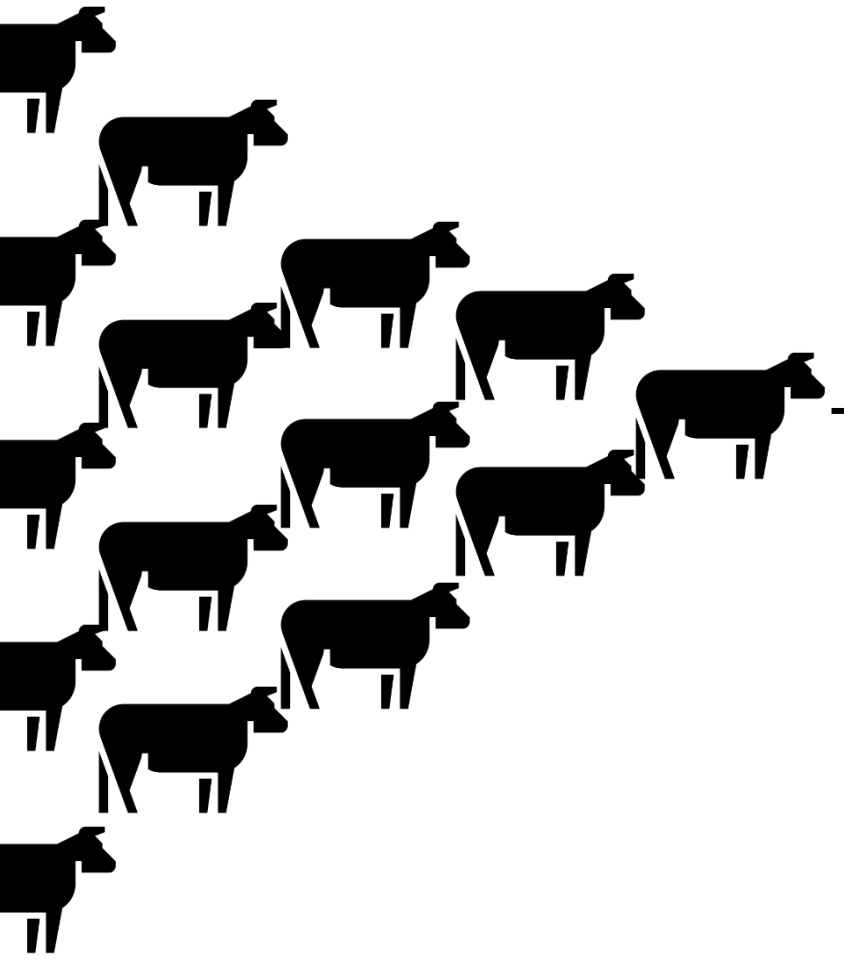
Textile Scaffold:
Recycled tires for max. strength and circularity

The surface of each fiber on the scaffold is impregnated with rich protein functionality



Bio-VERA™: Leather Alternative Technology

Supply Chain Integration to Fashion, Footwear & Auto



Value Proposition:

- **Haptics:** looks, feels, and ages like leather, suede, and chamois.
- **Adaptable:** Seamlessly reacts to tanning/finish craftsmanship.
- **Stronger:** close to 2x wear, tear, and strain performance vs leather.
- **Sustainable:** +90% renewable content (bio-mass or recycled).
- **Weight:** 25% lighter than leather.
- **Inventory:** Roll-to-roll optimized production, time, and inventory.
- **Energy Usage:** No freezing storage requirements.
- **Cruelty-Free:** Animal-free.

1st CMO
 Yearly capacity

=

500,000
 Cows per Year
 of Leather Production

OR

25 Million Tons
 Greenhouse gas emissions per yr
 (primarily methane)

Beauty & Biomed: Applications Overview of Innovations

Bio-Coll@gen™

Over Skin: ' Human Like Collagen III '



Performance:

- Topical application
- Safe, Biocompatible & BioStimulatory
- Clinically Proven Efficacy
- Odorless, Colorless
- For All Skin Types, Color, & Gender

Sustainability:

- Fermentation Based Green Tech
- Petrochemical Free
- Animal Free Collagen, Vegan & Halal
- Ethical & Cruelty Free
- Lab-To-Brand™ Traceability & Transparency

Scalability:

- Drop-in Tech
- Scaled and Commercialized

Pharma-grade Collagen

Under Skin: ' cGMP Human Like Collagen III '



Performance:

- Subcutaneous application
- Safe & Biocompatible
- Stimulate Native Type III Collagen Synthesis
- Promotes Cell Proliferation
- Low / No Cytotoxicity or Systemic Toxicity

Sustainability:

- Simplified Production and Purification Through Secreted Protein Process
- Fermentation Based - Petrochemical Free
- Animal Free Collagen
- Ethical & Cruelty Free


Scalability:

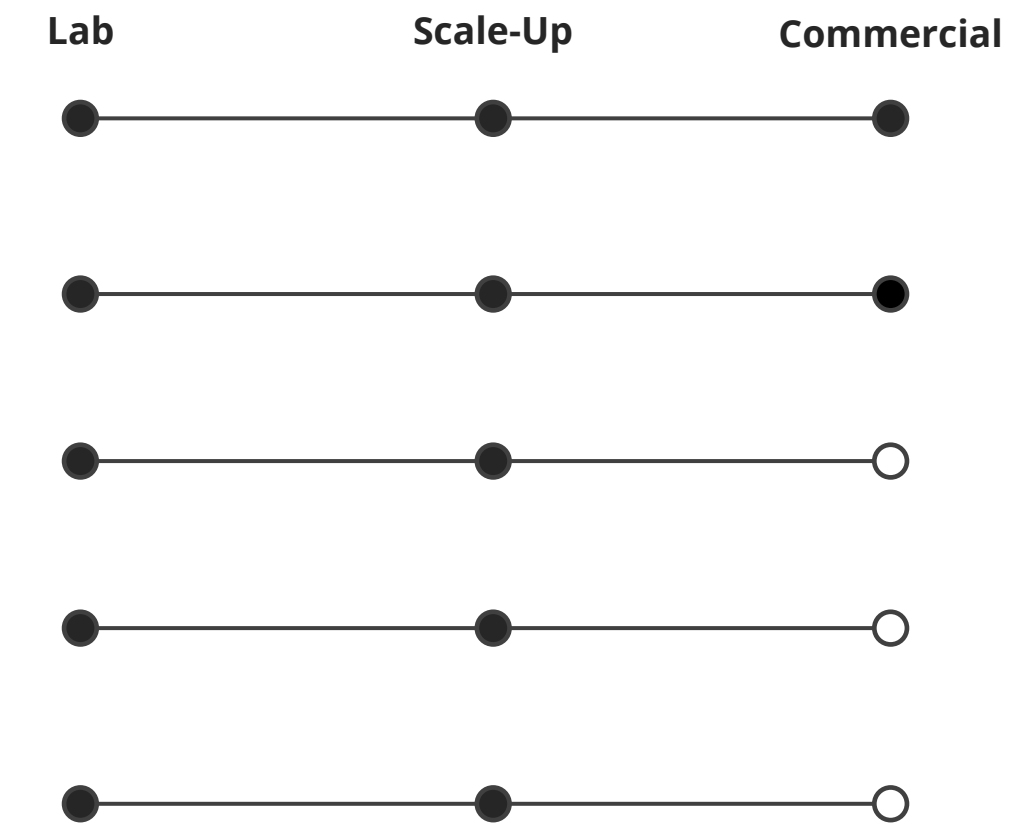
- Drop-in Tech

Market Applications
 Our **de-risked** technology enables disruptive products across **many** existing markets





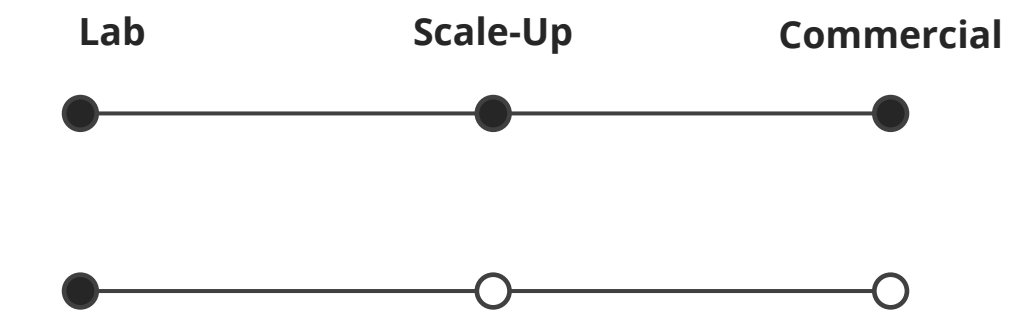
\$120B+
Market Size¹

-  **Bio-Tex™**
Leather-like Coated Textiles
-  **Bio-Canvas***
Other Coated Textiles
-  **Bio-VERA™**
Animal-free Leather Hide
-  **Bio-Shield™**
Outdoor Breathable Textiles
-  **Bio-FREED™**
Resource Efficient Dyeing



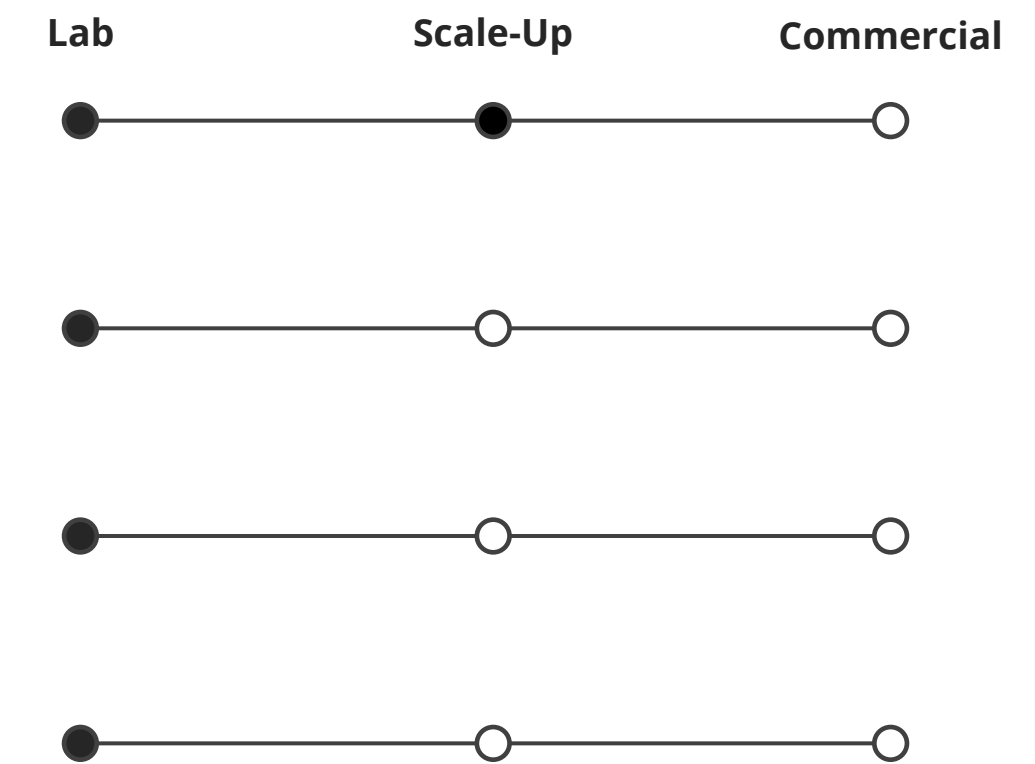
\$12B+
Market Size¹

-  **Bio-Coll@gen™**
Cosmetic Active Ingredient
-  **Supplements**



\$45B+
Market Size¹

-  **Dermal Aesthetics**
-  **Joint Therapeutics**
-  **Bone Replacements**
-  **Wound Healing**



*code name

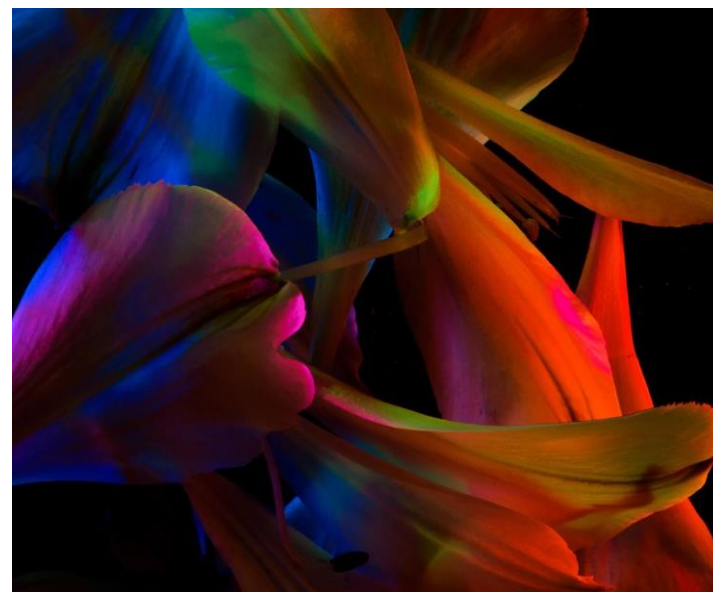
¹Serviceable Addressable Market (SAM)

Operative Model

Our upstream/horizontal platform enables a **range of drop-in solutions** with clear market fit **leveraging existing infrastructure** in scale-up and commercialization

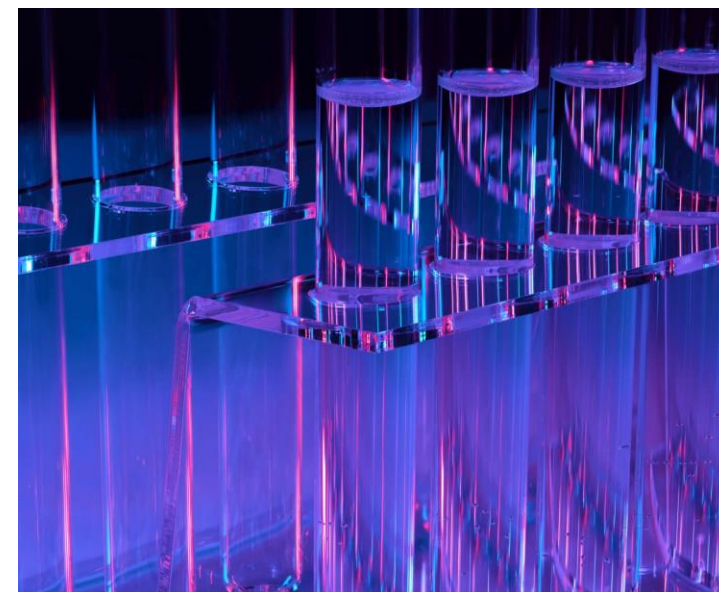
Biofabrication Platform

1. Protein Design



Design and select base protein for desired properties and functionality

2. Product Application



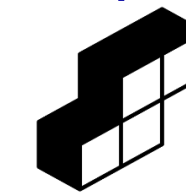
Leverage proprietary materials science to create product application

3. Material Tuning



Iterate with customer, tuning formulation and delivery mechanism to achieve target

Drop-in Technology



4. Partner Scale-up



Deploy best in class contract manufacturing partnerships, leveraging our drop-in tech

5. Commercialization



Leverage partner route-to-market to accelerate & amplify product commercialization



DROP-IN TECH SCALED THROUGH INDUSTRY-LEADER PARTNERSHIPS



LIMONTA | 1893

Fashion Coated Textiles - Italy



SINGTEX

Outdoor Breathable/Waterproof Textiles - Taiwan



HK Kolmar

Skin-care - Korea



@ EVONIK

Skin-care - Global



Uf
Ultrafabrics

Furniture / Interior Coated Textiles - Japan



People

We have an **experienced management** team with a strong operational track record



Catherine Roggero-Lovisi
CEO

- Revlon, President of North America
- L'Oréal Luxe, GM of APAC
- Christian Louboutin Beauté, Global GM



David Williamson
Chief Science & Technology Officer

- DuPont, Chief of Staff to CSTO
- DuPont, Strategic Leader of Bioactives & Biomaterials
- DuPont, CR&D Research Manager
- DuPont, Chem. & Solutions Ent., Analytical Lab Mgr



Jason Bailey
Chief Financial Officer

- Smith & Nephew, CFO Global Advanced Wound Management
- Galderma, Head of Finance for Prescription Drugs



Quintin Cassady
General Counsel

- Galderma, VP, GC & Compliance Officer North America
- Shannon, Gracey, Ratliff & Miller LLP, Partner



Pinky Lakhia
Chief Human Resources Officer

- Covetrus Pharma, Global VP of HR
- L'Oréal, Head of HR
- Verizon, HR Lead



Jeff Smith
GM, BioMaterials

- Evonik, VP High Performance Polymers
- Evonik, VP Health Care
- Evonik, VP Human Resources



Jason O'Neill
GM, Beauty

- Green Line, Managing Director
- Bio-Botanica, Executive Director



Investors & Advisors

We are supported by **seasoned experts, investors and thought leaders** committed to our vision

Board of Directors



Anna Bakst
Executive Chair

- Modern Meadow, CEO
- Kate Spade, Brand President & CEO
- Michael Kors, Group President
- DKNY, President of Accessories & Footwear



Andras Forgacs
Co-Founder

- Modern Meadow, Founding CEO
- Fork & Good, Co-founder & Chair
- Starlight Ventures, Partner



Eric Archambeau
Board Director

- Astanor Ventures
- Renowned ag-tech and food-tech investor



Dennis Fenton
Board Director

- Amgen, EVP
- Board Member: Nora, Kythera Biopharmaceuticals, Genzyme, Amira



Bart Swanson
Board Director

- Horizons Ventures
- Board Member at Zoom (IPO 2019) and Impossible Foods



Dr. Klaus Hommels
Board Director

- Lakestar, Founder & Chairman
- Renowned tech investor (Spotify, Facebook, Skype, Airbnb, ...)



Douglas Muzyka
Board Director

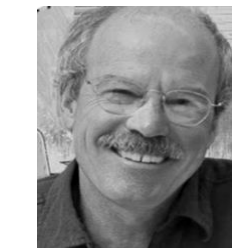
- DuPont, CS&TO

Scientific & Clinical Advisory Board



Gabor Forgacs
Co-Founder

- Fork & Good, Co-founder
- Organovo, Scientific Director
- Clarkson U., Prof.
- French Atomic Energy Agency



Glenn Prestwich

- Washington St U., Prof.
- GlycoMira Therapeutics, CIO
- University of Utah, Prof.



Stuart Newman

- New York Medical College, Prof.



Anders Gram

- Bactolife, COO
- Indigo, VP
- Axcella, SVP
- Christen Hansen, VP



Patty Walker MD, PhD
Board-certified dermatologist

- Brickell Biotech, President
- Kythera, Chief Medical Officer
- Allergan Medical Aesthetics, EVP and CSO



Bryan Liptzin
Quality and Compliance

- Summit Compliance Partners
- Amgen, Director
- Novartis Vaccines, Compliance

Key Investors



Impact Advisory Board



John Frazier

- Senior Technical Director, Hohenstein Institute America - an international research & testing company in textiles
- Former advisory board at ACS Green Chemistry Institute (GCI) & Green Chemistry Commerce (GC3)
- Head of the green chemistry head for the NIKE Explore Team (NXT)



Steve Rochlin

- ESG Thought Leader & Consultant
- As CEO-IO Impact advises Corporate Executives
- Senior Fellow, US Chamber of Commerce
- Former head of NA Advisory Services and Board Director of AccountAbility



www.modernmeadow.com

For investor related inquiries, please contact:

Jason Bailey

Chief Financial Officer

jbailey@modernmeadow.com

Juan Botero

Director of Finance

jbotero@modernmeadow.com

Disclaimer:

This presentation and data room access, as applicable, has been produced by Modern Meadow, Inc. (MM) and is furnished to you solely for your information and may not be reproduced or redistributed, in whole or in part, to any other person. No representation or warranty (expressed or implied) is made as to, and no reliance should be placed on, the fairness, accuracy or completeness of the information contained herein and, accordingly, MM does not accept any liability whatsoever arising directly or indirectly from the use of this information. In particular, the inclusion of any financial projections is presented solely for illustrative purposes and do not constitute a forecast. You should independently review the underlying assumptions of the financial projections. This document is intended for initial contact with individuals and entities known to MM. This document is intended for use by the individual or entity to whom it is sent, it is confidential and may not be reproduced in any form, further distributed to any other person, passed on, directly or indirectly, to any other person or published, in whole or in part, for any purpose without the prior written consent of MM. If you are not the recipient indicated and you have inadvertently received access to this information, you are to destroy it immediately. This presentation does not constitute or form part of, and should not be construed as, an offer, solicitation, or invitation to purchase, subscribe for, or otherwise acquire any securities nor shall it or any part of it nor the fact of its distribution form the basis of or be relied upon in connection with any contract or commitment whatsoever. Any investment decision should be made solely on final documentation, and then only after review of the diligence materials and consideration of all relevant risks. MM does not have any responsibility for the information contained herein and does not make any representations or warranties, express or implied, as to the adequacy, accuracy or completeness of any statements, estimates or other information contained in this document. The information contained herein is not guaranteed as to its accuracy or completeness. The presentation may include forward-looking statements, including, but not limited to, statements as to future operating results and potential developments and contracts. Forward-looking statements are sometimes, but not always, identified by their use of a date in the future or such words as "anticipates," "aims," "could," "may," "should," "expects," "believes," "intends," "plans" or "targets." By their nature, forward-looking statements are inherently predictive, speculative and involve risk and uncertainty because they relate to events and depend on circumstances that will occur in the future. There are several factors that could cause actual results and developments to differ materially from those expressed or implied by these forward-looking statements. No assurances can be given that the forward-looking statements in this presentation will be realized. MM does not intend to update these forward-looking statements. No securities regulatory authority has approved or expressed an opinion about MM's business prospects or any related securities. Any such securities have not been and will not be registered under the United States Securities Act of 1933, as amended (the "Securities Act"), or any other state or federal securities laws and may not be offered or sold in the United States of America absent registration under the Securities Act or an exemption from the registration requirements thereof. MM has not and will not be registered under the United States Securities Exchange Act of 1934, as amended or the US Investment Company Act of 1940, as amended. MM is a Delaware corporation and MM's registered office is 111 Ideation Way, Suite 100, Nutley, New Jersey 07110.



Company Overview Video



[click to view](#)

B.I/O:F@rm™



[click to view](#)

B.I/O:Alloy™



[click to view](#)